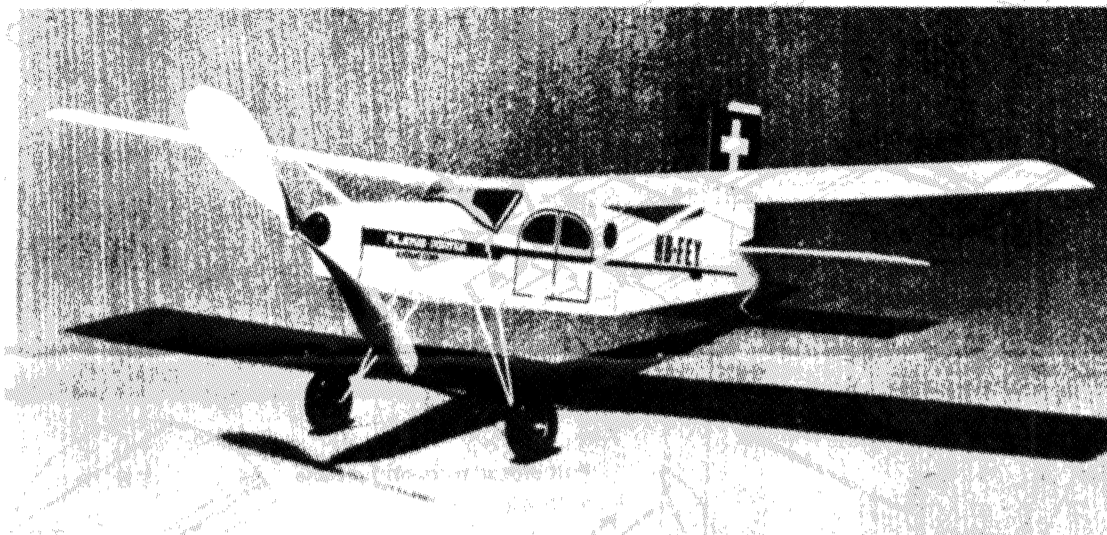


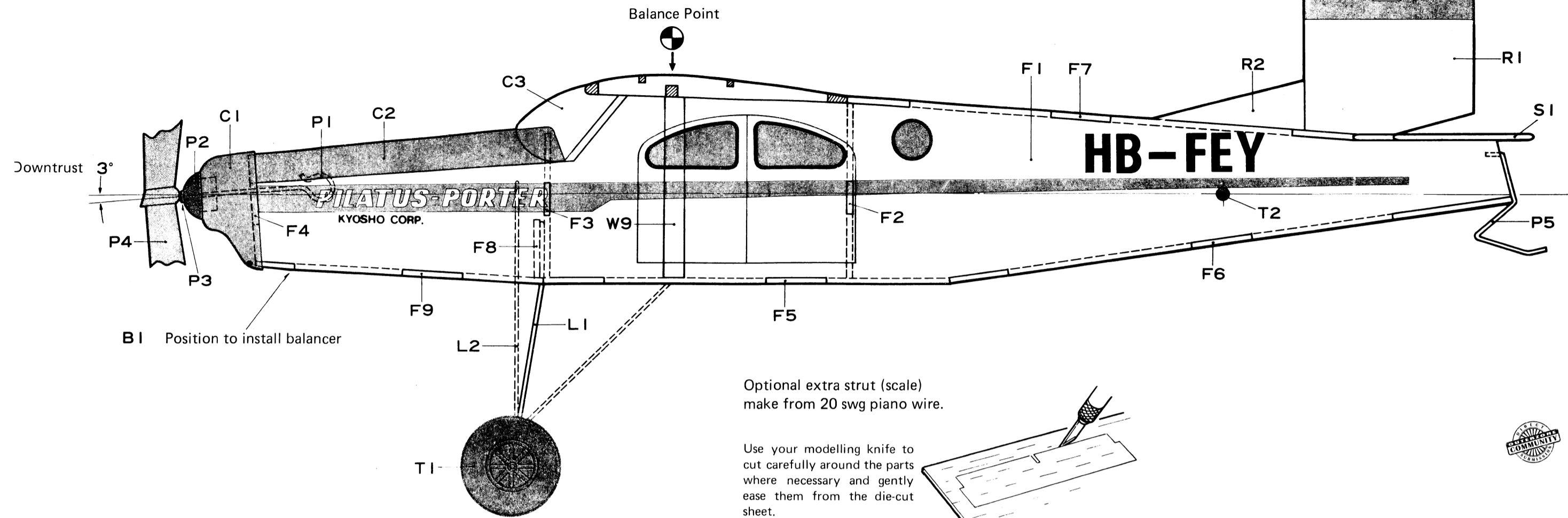
# RUBBER POWERED Balsa Model

## PILATUS TURBO PORTER



### TECHNICAL DATA

Wing Span ..... 480 mm  
 Length ..... 348 mm  
 Wing Area ..... 3.12 dm<sup>2</sup>  
 Weight ..... Approx 40 gm  
 Wing loading..... 12.82 gm/dm<sup>2</sup>



You will require the following materials and tools to complete your model:

- A pair of scissors
- 240 grade sandpaper
- Polythene sheet
- Spring clips or clothes peg
- Cellotape
- A pair of long-nosed pliers
- Modelling pins
- Balsa cement
- Modelling knife
- Rubber lubricant
- Button thread
- Contact adhesive

Optional extra strut (scale) make from 20 swg piano wire.

Use your modelling knife to cut carefully around the parts where necessary and gently ease them from the die-cut sheet.



### PARTS IDENTIFICATION

